



Biesbosch Museum

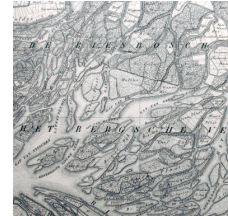


Werkendam



Biesbosch Museum

- Private foundation grounded in 1974
- Opening of museum in 1984
- Newly build museum in 1994
- Boattrips in cooperation with private entrepreneur in 2001; second boat available from January 2011
- Museum extended in 2002



Biesbosch Museum

What we can offer:

- Museum
- Documentation centre with library, archives and research facilities
- Boattrips with electrically powered boats
- Outside museum with walking facilities
- Guided walking tours
- Internetsite
- Visitor Information center



Biesbosch Museum

Situation 2011:

-Officially certified museum since 2005.

About 35.000 visitors a year of which about 15.000 visitors also make a boattrip

-About 4.000 non paying visitors a year who come to the museum for visitor or tourist information



Biesbosch Museum

Employed personnel

- Manager 36 uur (0,8 FTE)
- 2,1 FTE (1,6 museum/ reception; 0,4 archive/collection and 0,1 cleaning/maintenance)
- 1,0 FTE through sheltered employment

Volunteers (ca. 30)

- Board members
- Financial administration
- Public assistance
- Skippers on electrically powered boats



Biesbosch Museum



Biesbosch Museum



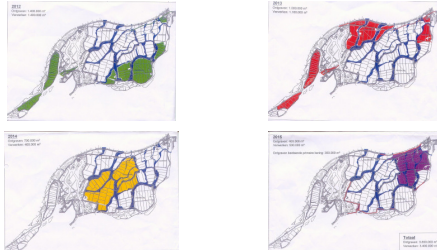
Nature development area Noordwaard

Biesbosch Museum



Ontwerpvisie Ontpoldering Noordwaard concept 04 tot 07 juli 2006

Biesbosch Museum



Planning of depoldering project 2012-2016

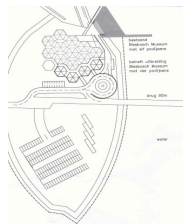
Expansion Biesbosch Museum



Inrichtingsplan Biesboschmuseum

Expansion Biesbosch Museum

Uitbreiding aan voorzijde huidige gebouw

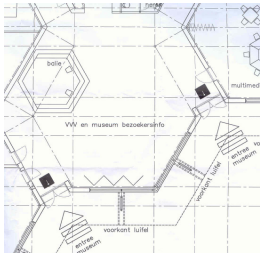


Expansion Biesbosch Museum



Front view expanded Biesbosch Museum

Expansion Biesbosch Museum



Entrance pavilion

Expansion Biesbosch Museum



Inrichtingsplan Biesboschmuseum

Expansion Biesbosch Museum

Planning expansion:

Start: September/October 2012
Completed: March/April 2013

Building process

- Sustainable building
- Investment included in adapting the climate facilities. The museum is currently heated by gas and will be heated geothermally.

Expansion Biesbosch Museum

Financing Scheme	
Required overall budget	€ 2.100.000,-
Defrayment	
Money raised by June 2011	€ 600.000,-
Still to be gathered	€ 1.500.000,-
Totaal	€ 2.100.000,-

Expansion Biesbosch Museum

Operating budget 2010:	€ 248.000,-
Number of paying visitors:	37.600
Paying visitors who have also made a boatrip	16.500
Estimated operating budget 2016	€ 440.000,-
Estimated number of paying visitors:	50.000

Expansion Biesbosch Museum

